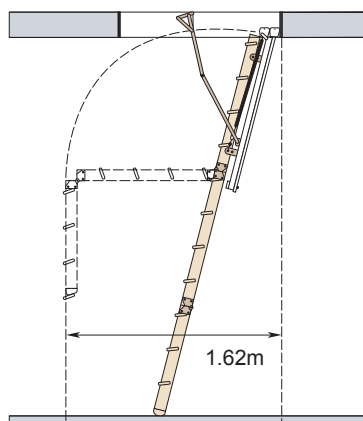


Eco S Line

Tables and Diagram - Page 1 of 1



Min. floor to Ceiling ht. (m)	Max. floor to ceiling ht. (m)	Max. arc of clearance in loft
Can be cut to suit	2.81 (3.51 with ext. kit)	No clearance needed as folds up into hatch

Order code	Product name	Casing size (m)			Sec	Total No. of Treads	Duty Rating kg/stone	Weight (kg)
		Length	Width	Depth				
345345	Eco S Line Folding Loft Ladder	1.13	0.55	0.14	3	12	150/23.62	26
346345	Eco S Line Extension kit (extends floor to ceiling ht. to 3.51m)							